

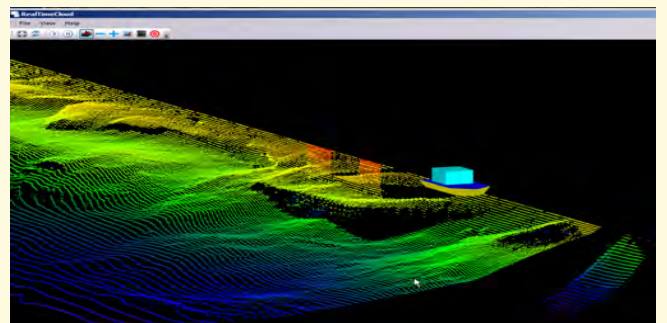
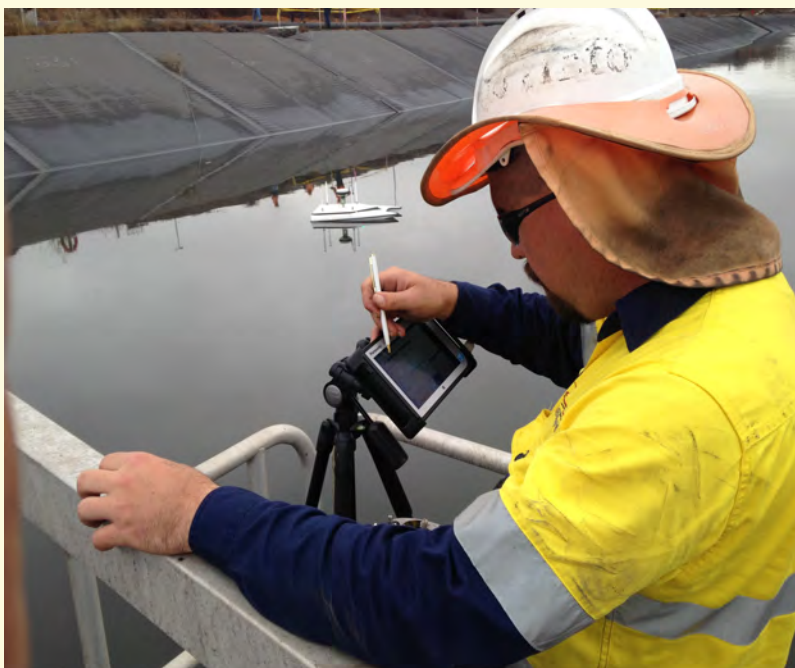
seamsurveys

Hydrographic/Bathymetric Surveying

SEAM Surveys Remote Controlled Bathymetric Survey Boat provides a safe, cost effective, accurate and efficient method of mapping hazardous waterbodies and liquid storage facilities. Such as:

- Mine tailings dams
- Abandoned mining pits
- Process leachate pits
- Reservoirs
- All natural water ways
- Waste water facilities
- Difficult/ hazardous areas:
 - ◆ Near spillways
 - ◆ Under jetties

Our survey boat utilises high precision RTK GNSS and a dual frequency 33/200khz Echosounder to conduct bathymetric surveys from 0.3 - 100 metres in depth. The advanced radio communications equipment used allows for remotely-operated boat surveys for ranges up to 700 metres, with all data transmitted to the shore in realtime.



seamsurveys

Advantages of Remote Controlled Hydrographic Boat

- **Cost Effective** - Fast and accurate surveys.
- **Ease of handling** - Small and lightweight, only 1200 mm long with multiple launch methods.
- **Portable and Efficient** - Launches at any site, avoids mobilising a full size work boat.
- **Safety** - Survey possible in areas that are otherwise not practical or safe. No staff on the water provides a low risk work environment.
- **Purpose Built** - All precision equipment sealed and protected from the elements and toxic environments.
- **Security of data** - no rework necessary due to loss of data with all on-board live data transmitting to shore.
- **Dual-beam echosounder** - More accuracy and redundancy than a single beam.



PO Box 1164
BONGAREE QLD 4507
P: 07 3408 2735

admin@seamsurveys.com.au - www.seamsurveys.com.au